



MIDWEST DENTAL CONFERENCE

**Kansas City, Missouri
April 3-6, 2025**

**Registration
Brochure**

Greetings From Your Alumni Presidents

MICHAEL LEBLANC (DDS '03)

President, UMKC Dental Alumni Association

ALEXMARIE GOMEZ (BSDH '22)

President, UMKC Dental Hygienists' Alumni Association

As this year's presidents of the UMKC Dental and Dental Hygienists' Alumni Associations, we are elated to invite you to the **2025 Midwest Dental Conference**. Conference planners have worked hard recruiting top speakers in the profession who will give you practical tips you can take home and start implementing immediately in your practice.

The conference, held Friday through Sunday, includes more than 30 sessions covering the topics of oral pathology, oral surgery, composites, team development, AI technologies, endodontics and more. Renowned speakers include Dr. Mark Hyman, Dr. Uche Odiatu, Dr. Erik Solberg and Michelle Strange, to name just a few. You also won't want to miss our hands-on prep and impressions and guided surgery workshops planned on Saturday. And, if you need additional CE hours or are looking to dive in a little deeper, Thursday's pre-conference specialty lectures feature topics on periodontics, pediatrics, prosthodontics and oral surgery. You can register just for Thursday or add one of the lectures to your MDC registration.

Don't miss the Exhibit Hall, where you will find innovative ideas and practical solutions. With friendly exhibitors dispensing expert advice on any and all of your practice needs, you can learn about the latest advancements in dental materials, equipment and services. We've also arranged a multitude of social events and activities to help you reconnect and celebrate with your friends, classmates and colleagues. Start your weekend at the annual Pouring from the Heart Gala, and have fun while supporting the School of Dentistry's students and patients. Our annual Welcome Party received a makeover this year. You won't want to miss out on what's in store for this fun event. And, if your graduating class year ends in a "0" or "5," you can probably count on some good times at your class reunion activities.

We look forward to seeing you in April at the 2025 Midwest Dental Conference in Kansas City!

ATTENDEE BADGES AND PACKETS WILL NOT BE MAILED AHEAD OF TIME. PLEASE PICK UP MATERIALS FOR PRE-REGISTERED ATTENDEES ON SITE.

Location

Courses, Exhibit Hall and conference activities will take place at the Sheraton Kansas City Hotel at Crown Center. Activities are easily accessible between the Sheraton and Westin by way of a connected pedestrian skywalk.

Sheraton Hotel at Crown Center
2345 McGee St.
Kansas City, MO 64108

Westin Crown Center
1 E. Pershing Road
Kansas City, MO 64108

Registration Desk Hours

Thursday, April 3	7 a.m.-5 p.m.
Friday, April 4	7 a.m.-5 p.m.
Saturday, April 5	7 a.m.-5 p.m.
Sunday, April 6	8 a.m.-10 a.m.

Exhibit Hall

Come check out the newest in dental equipment, materials and services in our Exhibit Hall located in the Crown Center Exhibit Hall, attached to the northwest corner of the Sheraton Kansas City Crown Center. This centerpiece of the conference is a fun, friendly and convenient way to stay up to date on the latest dental trends.

The Exhibit Hall is open from 10 a.m. to 6:30 p.m. on Friday and 8:30 a.m. to 4 p.m. on Saturday.

Welcome Party

We're moving this party to the Exhibit Hall – live music, food, drinks and fun, all in the Hall! Each registered attendee will receive one drink ticket with their attendee badge. Join us Friday, April 4, from 5 to 6:30 p.m. All registered attendees are invited.

Coffee Break – Sponsored by the UMKC School of Dentistry Dental Hygienist Alumni Association

Wake up and grab some coffee. Complimentary coffee will be available on Saturday, April 5, from 8:30 to 9:30 a.m. in the Exhibit Hall.

Statement Regarding Course Content

The UMKC Dental and Dental Hygienists' Alumni Associations feel an obligation to disseminate new knowledge in the dental field. However, the views expressed or the knowledge imparted by the speakers does not imply or reflect the endorsement of either the alumni associations or the UMKC School of Dentistry.

Conflict of Interest

The University of Missouri-Kansas City, an ADA CERP recognized provider, is responsible for disclosing to participants any monetary or other special interest instructors and course planners may have with any corporate organization, commercial entities or faculty positions. They are disclosed following the speakers' bios online at midwestdentalconference.org.

Handouts

Downloadable handouts will be available for all courses for which we receive materials from the speaker.

CONFERENCE INFORMATION AND UPDATES

Visit the conference website at midwestdentalconference.org. You can also email us at mdc@umkc.edu

HOW TO REGISTER FOR THURSDAY'S PRE-CONFERENCE SPECIALTY SESSIONS

Thursday's pre-conference specialty programs are all-day sessions and are not included in the Friday through Sunday registration. In order to receive six CE hours, you must attend the full-day session of the lecture for which you registered. You may not select more than one. Because Thursday's pre-conference specialty sessions are offered independently from the Midwest Dental Conference (MDC), additional fees and restrictions apply.

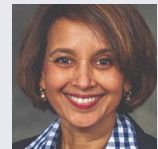
- If you are registering for a Thursday pre-conference specialty session AND the Midwest Dental Conference (Friday-Sunday), be sure to include payment for both with your registration. Thursday's pre-conference specialty sessions have fees in addition to the Midwest Dental Conference (Friday-Sunday) registration fee.
- If you are registering ONLY for a Thursday pre-conference specialty session, mark the session you plan to attend and include the corresponding program fee for that course in your payment. You do not need to also pay the MDC registration fee.

COURSES AT-A-GLANCE

Speaker	Course Title	Audience	Time	Fee
Purnima Kumar, DDS, Ph.D.	The 34th Annual Dr. Peter Fedi Periodontics Lecture The Mouth is Not Vegas; What Happens Here Does Not Stay Here	DDS, DH, DA, AUX	9 a.m.-Noon	\$140
	The 34th Annual Dr. Peter Fedi Periodontics Lecture Peri-Implant Diseases: Communication Failures		2-5 p.m.	
Chandur Wadhvani, DDS, MSD	The 29th Annual Dr. Dan Cruz Memorial Prosthodontic Lecture Improving Implant Practice & Restorative Skills Through Scientific Inquiry, Part 1	DDS, DH, DA	9 a.m.-Noon	\$165
	The 29th Annual Dr. Dan Cruz Memorial Prosthodontic Lecture Improving Implant Practice & Restorative Skills Through Scientific Inquiry, Part 2		2-5 p.m.	
Robert Weiss, M.D., DDS, FAAP	The 25th Annual Dr. Arthur E. Iwersen Pediatrics Lecture Head and Neck Pathology in the Pediatric Population, Part 1	DDS, DH, DA	9 a.m.-Noon	\$140/ \$165/ \$85
	The 25th Annual Dr. Arthur E. Iwersen Pediatrics Lecture Head and Neck Pathology in the Pediatric Population, Part 2		2-5 p.m.	
James Melville, DDS	The 32nd Annual Dr. Robert Allen Oral and Maxillofacial Surgery Lecture Contemporary Maxillofacial Reconstruction – Update on Tissue Engineering Growth Factors and Surgical Techniques	DDS, DH, DA, AUX	9 a.m.-Noon	\$140
	The 32nd Annual Dr. Robert Allen Oral and Maxillofacial Surgery Lecture Advancements in Maxillofacial Nerve Repair		2-5 p.m.	

The 34th Annual Dr. Peter Fedi Periodontics Lecture

The Mouth is Not Vegas; What Happens Here Does Not Stay Here



Purnima Kumar, DDS, Ph.D.
9 a.m.-Noon
3 CDE CREDITS



Dentistry has previously been a siloed specialty, with practitioners and patients perceiving the oral cavity and the diseases in this environment as discrete entities separate from the rest of the body. However, our daily practice is a constant reminder we treat patients, not just teeth or mouths. As more patients with complex medical histories seek dental care, we are driven to personalize their oral healthcare based on their overall health. This presentation will discuss the advances in our understanding of the link between oral health and overall health and explore how P4 medicine can be harnessed to deliver integrated care.

Peri-Implant Diseases: Communication Failures

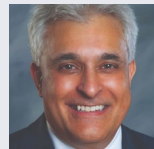
2-5 p.m.
3 CDE CREDITS



Dental implants have already replaced missing teeth in at least 100 million people. In addition, 1.3-2 million implants are placed each year, with an annual growth rate of nearly 15%. Although implants are estimated to have a survival rate of 95%, more than one million implants fail every year due to peri-implantitis, a disease triggered by disruption of host-microbial homeostasis. Our ability to prevent and treat peri-implantitis is hampered by a paucity of information on inter-microbial and host-microbiome interactions that underlie the disease. In this presentation, we provide insights into clinical disease progression and translate biological data into clinical applications.

The 29th Annual Dr. Dan Cruz Memorial Prosthodontic Lecture

Improving Implant Practice & Restorative Skills Through Scientific Inquiry, Part 1



Chandur Wadhvani, DDS, MSD
9 a.m.-Noon
3 CDE CREDITS



What are the reasons implants work, and why do they fail? Clinically applicable research will discuss how to determine if an implant is healthy or diseased. Is cement retained better than screw retained? When should each type of restoration be used? Are the implant companies giving us solutions, or do they make problems with their knowledge or lack of knowledge? How useful are radiographs? Should you probe around implants? These questions and many others will be discussed.

Improving Implant Practice & Restorative Skills Through Scientific Inquiry, Part 2

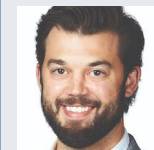
2-5 p.m.
3 CDE CREDITS



This lecture will discuss common issues related to implant restorations. For example, why screw loosening occurs often years later. Research will discuss how to improve esthetics of the materials used as well as the problems implant companies don't solve. All research and information shared is designed for clinical practice and can be implemented immediately.

The 25th Annual Dr. Arthur E. Iwersen Pediatrics Lecture

Head and Neck Pathology in the Pediatric Population, Part 1



Robert Weiss, M.D., DDS, FAAP
9 a.m.-Noon
3 CDE CREDITS



This will be the first session of a two-part series of lectures pertaining to the diagnosis and treatment of pediatric pathology of the head and neck region. There will be three, one-hour lectures with approximately 40 minutes of lecture and 20 minutes of reserved time for case presentations and questions.

Head and Neck Pathology in the Pediatric Population, Part 2

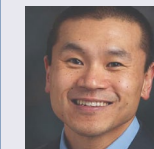
2-5 p.m.
3 CDE CREDITS



This will be the second session of a two-part series of lectures pertaining to the diagnosis and treatment of pediatric pathology of the head and neck region. As with the first session, there will be three, one-hour lectures with approximately 40 minutes of lecture and 20 minutes of reserved time for case presentations and questions.

The 32nd Annual Dr. Robert Allen Oral and Maxillofacial Surgery Lecture

Contemporary Maxillofacial Reconstruction – Update on Tissue Engineering Growth Factors and Surgical Techniques



James Melville, DDS
9 a.m.-Noon
3 CDE CREDITS



Tissue-engineered bone grafts have made the reconstruction of defects of the oral and maxillofacial region predictable and reliable without the need for harvesting autogenous bone. Multiple long-term clinical studies have shown tissue-engineered grafts to be equivalent to avascular autogenous bone grafts with the proper host bed and surgical technique. This session will give a brief synopsis of the preoperative workup, preparation and procedural options for patients with a benign tumor, post-resection defects and traumas. We will also briefly review initial evaluation, patient selection and state-of-the-art science regarding growth factors: autogenous bone substitutes and microvascular surgical techniques for optimal patient outcomes.

Advancements in Maxillofacial Nerve Repair

2-5 p.m.
3 CDE CREDITS



Latrogenic lingual and inferior alveolar nerve injuries are the most dreaded complications encountered by the oral and maxillofacial surgeon. Historically, direct nerve repair has a poor prognosis, and most surgeons have been reluctant to treat this condition. However, with the availability of nerve allograft and the development of new nerve reconstruction techniques, the efficacy, ease and predictability of repair and reconstruction have become the standard of care, with a near 90% recovery rate given repair in a timely fashion. This session will discuss the etiology, prevention and surgical advancements in nerve repair/reconstruction in iatrogenic and ablative/reconstructive surgery.



Note

To view complete course descriptions, visit the Midwest Dental Conference's website, midwestdentalconference.org.

Thursday's pre-conference specialty programs are all-day sessions and are not included in the Friday through Sunday registration. In order to receive six CE hours, you must attend the full-day session of the lecture for which you registered. You may not select more than one. Fees apply as noted.

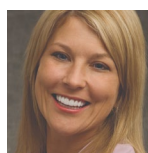
Audience Key

- Dental Assistant
- Dentist
- Paid Session
- Dental Hygienist
- Office/Auxiliary Staff

COURSES AT-A-GLANCE

Speaker	Course Title	Audience	Time
Shannon Nanne, RDH	Escape the Vape	DDS, DH, DA, AUX	9-10:30 a.m.
Joy Void-Holmes, DHSc, BSDH, RDH, FADHA, AADH	Diversity Reloaded: Embracing Differences, Even the Weird Ones	DDS, DH, DA, AUX	9-10:30 a.m.
Shannon Brinker, CDA	From Our Side of The Chair®	DDS, DH, DA, AUX	9 a.m.-Noon
Ashleigh Briody, DDS, M.S.	A New Approach to Oral Pathology	DDS, DH	9 a.m.-Noon
Mark Hyman, DDS, MAGD	A Day in The Life of a Top Gun Dental Team	DDS, DH, DA, AUX	9 a.m.-Noon
William Nudera, DDS, M.S.	ReThinking Endodontics: A Systematic Approach to Diagnosis and Case Selection	DDS	9 a.m.-Noon
Shannon Nanne, RDH	Become a Hero of Dentistry and Solve the Dry Mouth Mystery with Products that Work	DDS, DH, DA, AUX	10:45 a.m.-12:15 p.m.
Joy Void-Holmes, DHSc, BSDH, RDH, FADHA, AADH	Unapologetic Self-Care	DDS, DH, DA, AUX	10:45 a.m.-12:15 p.m.
Anne Guignon, RDH, MPH, CSP	Now THAT Makes Sense! Creating A Healthy, Sustainable Environment	DDS, DH, DA, AUX	2-3:30 p.m.
Melissa Turner, BASDH, RDHEP, EFDA	It's Never Been A Better Time to Be a Dental Hygienist	DH	2-3:30 p.m.
Ashleigh Briody, DDS, M.S.	A New Approach to Oral Pathology Cont'd	DDS, DH	2-5 p.m.
Mark Hyman, DDS, MAGD	Cases That Haunt Us: How to React, Rebound and Recover From Clinical Failures	DDS, DH, DA, AUX	2-5 p.m.
William Nudera, DDS, M.S.	Systematic Endodontics: A Methodical Approach to Root Canal Treatment	DDS	2-5 p.m.
Erik Solberg, DDS, DABOI/FAAID, FICOI, MaCSD	Laying the Foundation: Atraumatic Extraction and Implant Site Preparation	DDS	2-5 p.m.
Anne Guignon, RDH, MPH, CSP	Stop the Microbial Madness	DDS, DH, DA, AUX	3:45-5:15 p.m.
Melissa Turner, BASDH, RDHEP, EFDA	AI and Other Emerging Technology for the Dental Team: A Review of New and Innovative Products and Technology for the Clinical Team	DDS, DH, DA, AUX	3:45-5:15 p.m.

From Our Side of The Chair®



Shannon Brinker, CDA

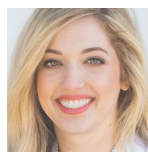
9 a.m.-Noon

3 CDE CREDITS



With a myriad of esthetic dental materials and techniques available today, dental assistants need to be more familiar than ever with all aspects of clinical practice. Understanding treatment goals and unique treatment considerations is essential to obtaining the desired outcome. Both contribute before, during and after the treatment delivery to foreseeing potential complications and making the process predictable. Achieving highly satisfying results should be the goal of everyone in the office, as well as the patient. This interactive lecture gives your team valuable perspectives from both sides of the chair.

A New Approach to Oral Pathology



Ashleigh Briody, DDS, M.S.

9 a.m.-Noon

3 CDE CREDITS



After a brief head and neck exam review, this course will cover entities in oral pathology. Similar entities will be presented side by side, with differences shown to emphasize how to tell them apart. Discussion will include how to recognize precancerous lesions, malignancies and immune-mediated diseases, as well as when to treat, how to treat and when to refer. The session also includes common radiographic findings with comparisons and interesting cases, going more in depth regarding common pathoses and treatment options.

A New Approach to Oral Pathology Cont'd

Ashleigh Briody, DDS, M.S.

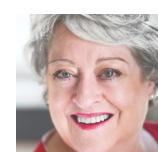
2-5 p.m.

3 CDE CREDITS



This course is a continuation of the morning session and will cover entities in oral pathology. Similar entities will be presented side by side, with differences shown to emphasize how to tell them apart. Discussion will include how to recognize precancerous lesions, malignancies and immune-mediated diseases, as well as when to treat, how to treat and when to refer. The session also includes common radiographic findings with comparisons and interesting cases, going more in depth regarding common pathoses and treatment options.

**Now THAT Makes Sense!
Creating a Healthy, Sustainable Environment**



Anne Guignon, RDH, MPH, CSP

2-3:30 p.m.

1.5 CDE CREDITS



Patient-centered care is not new. It is our “why,” and treating patients with a cookie-cutter approach is boring. Current research supports innovation – using new products to deliver the art and science of quality care.

This course will explore:

- What are a patient’s actual needs?
- Is it possible to create a customized care strategy that really addresses diagnostic needs, not just what is covered under a benefit plan?
- Can patients become active participants in building a successful health journey?

Stop the Microbial Madness

Anne Guignon, RDH, MPH, CSP

3:45-5:15 p.m.

1.5 CDE CREDITS



Antibiotics, antifungals and antivirals are now routinely used in both human medicine and agriculture to control or prevent diseases. But the ecological balance is tipping. An increasing number of organisms, known as super bugs, are now antimicrobial resistant. The global impact of resistant infections has ramifications that are just now being recognized. Widespread, indiscriminate use of antibiotics has led many in the healthcare community to question the actual vs. perceived benefits of routine premedication and post-operative prescriptions. Antibiotic stewardship is the responsibility of all healthcare providers.

A Day in The Life of a Top Gun Dental Team



Mark Hyman, DDS, MAGD

9 a.m.-Noon

3 CDE CREDITS



Listen, learn and laugh your way through a fast-paced, humorous review of “a day in the life” of a dynamic, real-world private dental practice. Learn how to capitalize on each other’s skills to improve the productivity of your practice and the quality of the service your team produces. Learn systems you can implement today to lower stress, prevent burnout and increase your enjoyment of dentistry.

**Cases That Haunt Us: How to React,
Rebound and Recover From Clinical Failures**

Mark Hyman, DDS, MAGD

2-5 p.m.

3 CDE CREDITS



Don’t deny it. Admit it – every one of us had had this happen during our careers. The cases where we didn’t read the patient well, didn’t get the proper diagnostic materials, didn’t take the time to really listen and see what was appropriate for our patient. Whether you have made a minor misjudgment or totally face-planted – now what?

Escape the Vape



Shannon Nanne, RDH

9-10:30 a.m.

1.5 CDE CREDITS



Many studies show smoking is harmful. When it comes to vaping, manufacturers don’t yet have to disclose what they put in the liquid, so we don’t know the long-term effects. What we do know is most vape liquid contains chemicals that can lead to addiction and may cause cancer. Electronic cigarette users may experience xerostomia and increased risk for tooth decay due to the vaporized liquid entering the mouth. Aerosols from vaping irritate the lining of the mucosa and are absorbed into the buccal mucosa and the pharyngeal tissues. Explosions while vaping can lead to severe burns and even death.

**Become a Hero of Dentistry and Solve the
Dry Mouth Mystery with Products that Work**

Shannon Nanne, RDH

10:45 a.m.-12:15 p.m.

1.5 CDE CREDITS



Xerostomia is a serious condition that is annoying and uncomfortable and usually caused by a disease or underlying condition. It affects your patient’s quality of life while speaking, eating or even trying to sleep. Hypo-salivation can damage the hard and soft tissues of the mouth while presenting a clinical challenge in the operator. Twenty-five percent of your patients suffer from this affliction. This course will turn you into a dry mouth superhero. Learn the reasons why your patients suffer from dry mouth, the intra-oral problems associated with it and the options available to help your patients manage their symptoms.

**ReThinking Endodontics: A Systematic
Approach to Diagnosis and Case Selection**



William Nudera, DDS, M.S.

9 a.m.-Noon

3 CDE CREDITS



The ability to present and discuss all reasonable treatment options helps keep patient expectations in line with what is clinically possible. The foundation for informed decision-making must strike a balance between knowledge, communication and expectation. The ability to diagnose and communicate findings as it relates to reasonable treatment options and long-term predictability is a critical skill that can impact the confidence and trust between the patient and the treating clinician. This presentation is designed to help establish a systematic and methodical approach to endodontic diagnosis and give clinicians the necessary communication tools to improve the informed decision-making process.

**Systematic Endodontics: A Methodical
Approach to Root Canal Treatment**

William Nudera, DDS, M.S.

2-5 p.m.

3 CDE CREDITS



Root canal treatment can be a very rewarding part of any dental practice when the treatment process goes as planned. But when control over the treatment is lost, this procedure can be fraught with challenges and frustrations for both the practitioner and the patient. This course will identify and teach the critical skills necessary to establish a systematic and methodical approach to basic root canal treatment for predictable treatment outcomes. This course is designed to help the practitioner understand the critical core concepts and principles used by the endodontist to achieve a predictable root canal treatment every time. Applying the techniques taught in the course will improve the clinician’s confidence and knowledge with basic root canal treatment in the general practice.

Laying the Foundation: Atraumatic Extraction and Implant Site Preparation

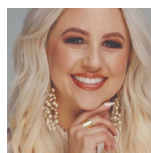


Erik Solberg, DDS, DABOI/FAAID, FICOI, MaCSD
2-5 p.m.
3 CDE CREDITS



Many times, “out with the old” is the hardest part to accomplish in implant treatments. In this course, we will review a predictable process for atraumatic tooth extraction, crucial bone sparing techniques and instruments and armamentarium that is key to success. Once the tooth is out, we can start rebuilding the site using the best available biomaterials. We will review material selection and suturing techniques to allow proper closure of the sites, setting the foundation for ideal healing and “easy” implant placements down the line.

It's Never Been A Better Time to Be a Dental Hygienist



Melissa Turner, BASDH, RDHEP, EFDA
2-3:30 p.m.
1.5 CDE CREDITS



It's a new day in dentistry, and the future for dental hygienists is strong and bright. With ever-increasing roles and responsibilities both inside and outside of the dental op, this course will review the modern pathways available for hygienists - influencer, advisor, educator, entrepreneur, writer and more. It's never been a better time to be a dental hygienist – this is our time to shine.

AI and Other Emerging Technology for the Dental Team: A Review of New and Innovative Products and Technology for the Clinical Team

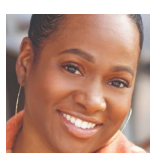
Melissa Turner, BASDH, RDHEP, EFDA
3:45-5:15 p.m.
1.5 CDE CREDITS



Artificial intelligence. Augmented reality. Machine learning. Virtual care. Innovation in dentistry is on the rise with countless new products, technology and services entering the space. In this deep dive into the newest technology available for oral health professionals, take a walk through the patient journey to understand the countless ways dental teams currently use technology (and even what's coming down the line). From identifying pathologies on radiographs, to equipment maintenance, oral healthcare apps and more, this deep dive into innovation will help hygienists become more efficient and effective in their clinical ops.



Diversity Reloaded: Embracing Differences, Even the Weird Ones



Joy Void-Holmes, DHSc, BSDH, RDH, FADHA, AADH
9-10:30 a.m.
1.5 CDE CREDITS



The power of diversity lies in its potential to unlock new ways of thinking to innovate and empower individuals, organizations and communities. A diverse workforce alone is not sufficient. We need to prioritize multicultural sensitivity, non-judgmental listening, mutual understanding and respect. In this presentation, explore the various cultural competencies that are crucial components of the broader diversity landscape. Participants will cultivate skills to develop meaningful connections and foster a workplace culture that supports personal growth and inclusivity.

Unapologetic Self-Care

Joy Void-Holmes, DHSc, BSDH, RDH, FADHA, AADH
10:45 a.m.-12:15 p.m.
1.5 CDE CREDITS



Those who work in caring professions are often encouraged to prioritize care for others over themselves, even though they are especially susceptible to the negative consequences of this practice. This depletion of inner resources eventually leads to burnout, mental exhaustion, low self-esteem, perceived loss of self and other systemic issues. Many of these symptoms can be remedied by prioritizing the self first. Participants of this course will learn to redefine their self-care practices, recognize how to establish healthy boundaries and devise actionable strategies for self-care that allow them to show up as their best self in everyday life.



Note

To view complete course descriptions, visit the Midwest Dental Conference's website, midwestdentalconference.org.

COURSES AT-A-GLANCE

Speaker	Course Title	Audience	Time	Price
Emily Boge, EdH, RDH, CDA, FAADH, FADHA	Ethics in the Dental Practice	DDS, DH, DA, AUX	9-10:30 a.m.	
Joy Raskie, RDH	Role of Lasers in Hygiene	DDS, DH, AUX	9-10:30 a.m.	
Charles Loretto	Financial Decisions the Dentist Must Get Right: Flipping Uncertainty into Security	DDS	9 a.m.-Noon	
Uche Odiatu, DMD	Inflammation 911: The Mouth-Body-Mind Connection	DDS, DH, DA, AUX	9 a.m.-Noon	
John Zalesky, DMD, MBS, FICOI, FAGD	Prep and Impress for Success	DDS, DH, DA, AUX	9 a.m.-Noon	
Erik Solberg, DDS, DABOI, FAAID, FICOI, MaCSD	Guided Implant Surgery: Is It Always a Slam Dunk?	DDS	9 a.m.-Noon	
Emily Boge, EdH, RDH, CDA, FAADH, FADHA	Pain in the What? Assessing Trigeminal Neuralgia and Facial Pain	DDS, DH, DA, AUX	10:45 a.m.-12:15 p.m.	
Joy Raskie, RDH	Utilizing Lasers in Your Perio Program	DDS, DH, AUX	10:45 a.m.-12:15 p.m.	
Anne Rice, RDH, B.S., FAAOSH, CERTBBM	The Battle of the Microbiome: The Synergistic Relationship Between Oral Health and Nutrition	DDS, DH, DA, AUX	2-3:30 p.m.	
Michelle Strange, MSDH, RDH, CDIPC	Preserving Smiles: A Journey Into Minimally Invasive Oral Healthcare	DDS, DH, DA, AUX	2-3:30 p.m.	
Charles Loretto	Owning Your Practice: The Bridge to Financial Freedom	DDS	2-5 p.m.	
Uche Odiatu, DMD	It's Not You, It's Your Bacteria: Seven Things You Need to Know About Your Patient's Guts	DDS, DH, DA	2-5 p.m.	
John Zalesky, DMD, MBS, FICOI, FAGD	HANDS-ON WORKSHOP: Prep and Impress for Success	DDS, DH, DA, AUX	2-5 p.m.	\$300
Erik Solberg, DDS, DABOI, FAAID, FICOI, MaCSD	HANDS-ON WORKSHOP: Guided Surgery	DDS	2-5 p.m.	\$300
Anne Rice, RDH, B.S., FAAOSH, CERTBBM	Women in Dentistry: Strong Mind Initiative	DDS, DH, DA, AUX	3:45-5:15 p.m.	
Michelle Strange, MSDH, RDH, CDIPC	Teledentistry: Meeting Patients Where They Are... On Their Phones	DDS, DH, DA, AUX	3:45-5:15 p.m.	

Ethics in the Dental Practice



Emily Boge, EdH, RDH, CDA, FAADH, FADHA
9-10:30 a.m.
1.5 CDE CREDITS



This course intends to provide clear information and guidance for clinicians as they navigate the unique ethical decision-making challenges of private practice. This course also reviews the Standards of Clinical Dental Hygiene Practice and relates them to ethical decision-making in dental hygiene.

Pain in the What? Assessing Trigeminal Neuralgia and Facial Pain

Emily Boge, EdH, RDH, CDA, FAADH, FADHA
10:45 a.m.-12:15 p.m.
1.5 CDE CREDITS



This course provides clear information and guidance for clinicians as they navigate potential trigeminal neuralgia cases and the new ADA specialty of orofacial pain. This complex and multifaceted field encompasses a wide range of conditions and treatments affecting the mouth, face, head, neck and related structures. In this course, learners will gain an introduction to the dental professional's role in that process of care as an interprofessional collaborative health care provider.

Audience Key

- Dental Assistant
- Dentist
- Paid Session
- Dental Hygienist
- Office/Auxiliary Staff

Financial Decisions the Dentist Must Get Right: Flipping Uncertainty into Security



Charles Loretto
9 a.m.-Noon
3 CDE CREDITS



This course offers an opportunity to flip today's uncertainty into a roadmap for future financial security. Taking the lessons learned from new tax legislation, staffing constraints, inflation and market volatility, doctors can be prepared and confident with whatever the upcoming year holds. In this interactive course, attendees will learn proven formulas behind building wealth, improving cash flow, getting ahead on pension and retirement planning – plus – the short- and long-term benefits of various savings environments. Additionally, the course will discuss how private equity works in dental practices and when you should and shouldn't consider it.

Owning Your Practice: The Bridge to Financial Freedom

Charles Loretto
2-5 p.m.
3 CDE CREDITS



All too often, the decision over if and when to own a dental practice becomes an emotional journey rather than a business decision. This session offers attendees the ability to fix their focus on long-term success, with the full disclosure of both the benefits and obstacles of owning a dental practice. During this lecture, attendees will understand what they need to accomplish before starting a new practice or finding an existing opportunity. This lecture illuminates the path a new dentist should take to achieve long-term personal and financial success.

Inflammation 911: The Mouth-Body-Mind Connection



Uche Odiatu, DMD
9 a.m.-Noon
3 CDE CREDITS



There is an avalanche of evidence demonstrating the connection between your patients' mouths with modern lifestyle habits: lack of sleep, shift work, poorly managed stress, overeating and sedentary living. And it's bi-directional; the oral environment has far-reaching effects on the rest of the body. Set yourself apart from the pack and develop a value-added practice. This fact-filled and inspirational program is a call to arms against inflammation, covering specific dental and lifestyle solutions to help change your patients' health destiny.

It's Not You, It's Your Bacteria: Seven Things You Need to Know About Your Patient's Guts

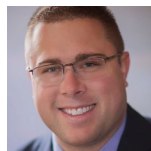
Uche Odiatu, DMD

2-5 p.m.
3 CDE CREDITS



Our patient's gut bacteria make very powerful anti-inflammatory agents when fed key nutrients. Learn what impacts gut integrity: antibiotics, jet lag, fast food, artificial sweeteners and what we dental pros can do. The latest science from the National Institutes of Health shows the microbiome impacts overall health as much as our genes, and the number one way to influence it is your diet. Dental industry people are the key healthcare professionals to ensure optimum functioning of the masticatory system. Attend this insightful session and enjoy a novel path to lower your patients' inflammatory burden.

Prep and Impress for Success



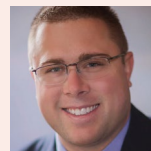
John Zalesky, DMD, MBS, FICOI, FAGD
9 a.m.-Noon
3 CDE CREDITS



Whether you are a new dentist or have been in practice for many years, you are assured to pick up some valuable pearls from this course that you will be able to incorporate with confidence. Preparation design and impressions are vital factors for the success of both single tooth and full arch cases. This course takes an in depth look at the importance of precision in creating well-designed tooth preparations, along with accurate analog and digital impression techniques for a predictable and repeatable workflow. After all, any case is only as good as the prep and impression it starts with!

This lecture is mandatory to attend if you are registered for the "Prep and Impress for Success" hands-on workshop.

HANDS-ON WORKSHOP: Prep and Impress for Success



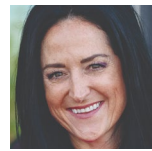
John Zalesky, DMD, MBS, FICOI, FAGD
2-5 p.m.
3 CDE CREDITS



Whether you are a new dentist or have been in practice for many years, you are assured to pick up some valuable pearls from this hands-on course that you will be able to incorporate with confidence. Preparation design and impressions are vital factors for the success of both single tooth and full arch cases. This course takes an in depth look at the importance of precision in creating well-designed tooth preparations, along with accurate analog and digital impression techniques for a predictable and repeatable workflow. After all, any case is only as good as the prep and impression it starts with!

If registered for this workshop, you must attend the "Prep and Impress for Success" lecture on Saturday morning.

Role of Lasers in Hygiene



Joy Raskie, RDH
9-10:30 a.m.
1.5 CDE CREDITS



This course will analyze lasers: where they came from, how they work, new features with newer lasers and how lasers differ from other modes of treatment and technology used in dental hygiene. We will explore how dental hygienists are incorporating lasers into their daily routine, breaking each procedure down into easy-to-learn steps. Attendees will be able to identify the ideal patients for laser treatment, what the laser is doing inside the body to help the patient, when to incorporate lasers within the hygiene visit, what kind of results to expect and how they can increase profits utilizing lasers.

Utilizing Lasers in Your Perio Program

Joy Raskie, RDH
10:45 a.m.-12:15 p.m.
1.5 CDE CREDITS



This course is designed for dental professionals who want to deepen their understanding of how lasers can be utilized in periodontics. Attendees will have the opportunity to explore the four classifications of periodontal disease as defined by the American Academy of Periodontology (AAP) and learn how lasers can be used within each stage of the disease. By the end of the course, attendees will have a comprehensive understanding of the benefits of laser therapy in periodontics and how the therapy can be used to improve treatment outcomes.

The Battle of the Microbiome: The Synergistic Relationship Between Oral Health and Nutrition



Anne Rice, RDH, B.S., FAAOSH, CERTBBM
2-3:30 p.m.
1.5 CDE CREDITS



Oral dysbiosis, caused by a loss of microbial diversity, increased presence of pathogenic microbes and a loss of beneficial microbes culminating to periodontal disease is becoming a challenge to treat. Science is mounting surrounding biofilm and resistant pathogens, leading to clinician and patient frustration. This presentation will offer a comprehensive exploration of the connection between nutrition and periodontal health, providing practical information and strategies for oral healthcare providers to integrate into their toolkit.

Women in Dentistry: Strong Mind Initiative

Anne Rice, RDH, B.S., FAAOSH, CERTBBM

3:45-5:15 p.m.
1.5 CDE CREDITS



Society has made progress in equality, but women still experience gaps in income, power and representation. There is also a more fundamental crisis: the gap in knowledge about their health. This session will look at critical diagnostic tools to maximize healthy brains and identify areas to prevent disease in women through diet, exercise, sleep, supplements, stress and balance. There are nearly one million women within the field of dentistry, and this course will not only help attendees personally, but also as practitioners, to better serve the millions of women in our practices.

Guided Implant Surgery: Is It Always a Slam Dunk?



Erik Solberg, DDS, DABOI, FAAID, FICOI, MaCSD
9 a.m.-Noon
3 CDE CREDITS



As with any discipline in dentistry, you need a repeatable, accurate process for guided surgery. This lecture will touch on what data is needed for proper diagnoses and planning and how to ensure it is obtained properly. We will also review guide design principles, the positives of guided surgery with case review of ideal outcomes and will call out 15 specific possible obstacles to be aware of when completing guided surgery.

This lecture is mandatory if you are registered for the "Guided Surgery" hands-on workshop.

HANDS-ON WORKSHOP: Guided Surgery



Erik Solberg, DDS, DABOI, FAAID, FICOI, MaCSD
2-5 p.m.
3 CDE CREDITS



This hands-on session will be an extension of the morning session on guided surgery. The lecture component will expand on the different guided drill kits available with nuances of each type of system. We will watch guided surgery videos of fully-guided and pilot-guided surgery, followed by hands-on experience using a keyed system with both fully guided and pilot-guided protocols, inclusive of exercises to review some of the common challenges experienced during implant placement.

If registered for this workshop, you must attend the "Guided Implant Surgery: Is It Always A Slam Dunk?" lecture on Saturday morning.

Attendees need to bring Loupes and head lights for the workshop.

Preserving Smiles: A Journey Into Minimally Invasive Oral Healthcare



Michelle Strange, MSDH, RDH, CDIPC
2-3:30 p.m.
1.5 CDE CREDITS



Minimally invasive dentistry represents the cutting-edge frontier of oral healthcare, and this course will serve as your gateway to its myriad of possibilities. Attendees will be guided through a broad scope of topics, ensuring they are well-equipped to deliver the highest level of patient-centered care. Throughout this immersive learning experience, participants will acquire a rich understanding of innovative techniques and strategies that elevate the standard of care and champion the preservation of valuable tooth structures.

Teledentistry: Meeting Patients Where They Are... On Their Phones

Michelle Strange, MSDH, RDH, CDIPC

3:45-5:15 p.m.
1.5 CDE CREDITS



Teledentistry is more than just staying in contact with patients as it also opens up the practice to a broader demographic and creates remote ways to carry out diagnoses and dental care. It is shaping the future of dentistry as a whole, specifically, the dental professionals of the future. Patients are wanting more ways to access their healthcare providers, and dentistry will need to adapt to better engage with patients.

Audience Key

- Dental Assistant
- Dentist
- Paid Session
- Dental Hygienist
- Office/Auxiliary Staff

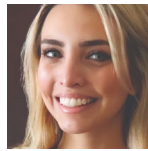
Note

To view complete course descriptions, visit the Midwest Dental Conference's website, midwestdentalconference.org.

COURSES AT-A-GLANCE

Speaker	Course Title	Audience	Time
Jacqueline Clarke, J.D.	The Service Side of Dentistry: Managing Expectations and Handling Situations When Treatment Does Not Go As Planned	DDS, DH, DA, AUX	9 a.m.-Noon
Brandon James, DDS	The Fixed Implant Supported Full Arch Reconstruction: A Search for Knowledge and a Mastering of the Protocol	DDS, DH, DA	9 a.m.-Noon
Gigi Meinecke, RN, DMD, FAGD	The Business of Beauty: Are Injectables a Good Fit in Your Practice?	DDS, DH, DA, AUX	9 a.m.-Noon

The Service Side of Dentistry: Managing Expectations and Handling Situations When Treatment Does Not Go As Planned



Jacqueline Clarke, J.D.

9 a.m.-Noon
3 CDE CREDITS



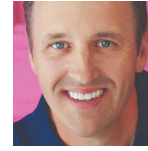
During this session, we will examine the changing nature of the modern patient, the perception of dentistry as a "service" as opposed to medical treatment, and patients' expectations in dental treatment. We'll discuss how these shifting dynamics are resulting in increased claim frequency and severity. We'll then examine handling difficult patients in situations of adverse events or when a patient perceives treatment as not going as planned. Specifically, we'll examine the use of refunds, waivers, apologies and dismissal, as well as how to handle situations where patients take to online platforms to showcase their praise or criticism of your treatment.



Audience Key

- Dental Assistant
- Dentist
- Paid Session
- Dental Hygienist
- Office/Auxiliary Staff

The Fixed Implant Supported Full Arch Reconstruction: A Search for Knowledge and a Mastering of the Protocol



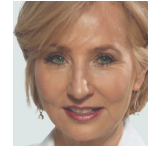
Brandon James, DDS

9 a.m.-Noon
3 CDE CREDITS



Take a deep dive into the treatments/management of the full arch, fixed implant supported restoration. We will discuss and emphasize the importance of proper treatment planning and when to say "no." We will then discuss the rules of engagement in a properly planned and executed treatment. Finally, we will talk about how technology and advancements can help us succeed and what is taking this treatment into the next era of care.

The Business of Beauty: Are Injectables a Good Fit in Your Practice?



Gigi Meinecke, RN, DMD, FAGD

9 a.m.-Noon
3 CDE CREDITS



Before committing time and financial resources to a treatment modality such as facial injectables, it's important to know if these procedures suit your practice, your skills and especially your interests. This program provides an overview of current FDA-approved facial injectables and how they integrate with dental practice.



Note

To view complete course descriptions, visit the Midwest Dental Conference's website, midwestdentalconference.org.

BE A GUEST OF THE BEST KANSAS CITY CONVENTION HOTELS

Both the Sheraton Kansas City Hotel at Crown Center and the Westin Hotel at Crown Center offer MDC participants a special conference rate for single or double rooms.

It is important to the conference's success that rooms are booked within the MDC reserved block of rooms. If registering by phone, please inform the hotel you are registering for the **2025 Midwest Dental Conference** of the UMKC School of Dentistry Alumni Associations or register online using the hotel links on the conference website.

MAKE YOUR HOTEL RESERVATIONS ONLINE

Visit midwestdentalconference.org and select "Hotels" from the menu.

Note

People with speech or hearing impairments can reach UMKC by using Relay Missouri, **1-800-735-2966 (TTY)** or **1-800-735-2466 (Voice)**.

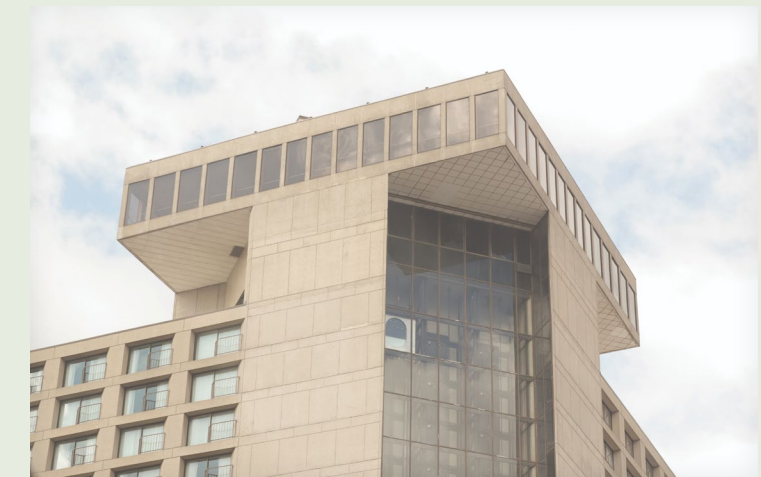


SHERATON KANSAS CITY HOTEL AT CROWN CENTER

RESERVATIONS

2345 McGee St.
Kansas City, MO 64108
• \$193 single/double
• \$203 triple/quad

Online or by calling 816-841-1000
by March 21, 2025



WESTIN KANSAS CITY HOTEL AT CROWN CENTER

RESERVATIONS

1 E. Pershing Rd.
Kansas City, MO 64108
• \$193 single/double
• \$203 triple/quad

Online or by calling 816-474-4400
by March 21, 2025

Win Dinner for Two and A Room With A View

A \$20 donation to the UMKC Dental or Dental Hygienists' Alumni Association scholarship funds will enter your name in a drawing for one free night at either the Sheraton Kansas City Crown Center or Westin Hotels AND dinner for two at Spectators Sports Bar in the Sheraton or One East at the Westin. (In 2024, scholarships from this fund were awarded to two students.) Just mark the appropriate box on the registration form and add an extra \$20 (or more) to your total fees. Entries must be received by the pre-registration deadline.



THURSDAY, APRIL 3, 2025

This annual “party with a purpose” provides crucial funding for our students and patients at the UMKC School of Dentistry. Proceeds raised fund student-patient clinical experiences that not only give our students crucial hands-on experience towards graduation, but also provide our patients with necessary treatments.

Enjoy an evening of fine food, fine wine and fine company all while supporting the students and patients of the UMKC School of Dentistry. The night wouldn't be complete without an auction and a few fun antics.

You can include your individual reservations on your Midwest Dental Conference registration form or call 816-235-2022 for an invitation.




WELCOME PARTY

FRIDAY, APRIL 4 • 5-6:30 P.M.
Presented by the UMKC Dental and Dental Hygienists' Alumni Associations

WE'RE MOVING THIS PARTY TO THE EXHIBIT HALL — live music, food, drinks and fun, all in the Hall! Each registered attendee will receive one drink ticket with their attendee badge.

All registered attendees are invited.



CLASS REUNIONS

Classes whose graduation year ends in a “0” or “5” will be celebrating reunions at the MDC 2025.

Watch your mail for additional information. You can also contact your class representative or call the Alumni Office at 816-235-2060.



ACD, ICD AND PIERRE FAUCHARD ACADEMY LUNCHEON

FRIDAY • APRIL 4 • NOON
COST: \$50

Advanced registration required by March 7. Mark your registration form.




STUDENTS AND RECENT GRADS EVENT

FRIDAY, APRIL 4 • 4-5:30 P.M.
COST: NO FEE

Gather with fellow students and recent grads for an opportunity to network and build relationships with those who are or recently have been in your shoes in a relaxed setting. Learn from each other while also sharing a few laughs and lagers (other beverages provided, too).

Please RSVP when registering.



DENTAL HYGIENE LUNCHEON CELEBRATION

FRIDAY, APRIL 4 • NOON
COST: \$50

Reservations required by March 7. On-site registrations will not be taken.

All dental hygiene alumni and friends are invited!

Join us for this celebration of dental hygienists. We will have a brief annual business meeting followed by recognizing reunion years, honoring awardees and connecting with colleagues, classmates and friends.


For questions:
Alexandra Tucker • alexandrab.tucker@yahoo.com • 501-628-7348
Follow UMKC DHAA on facebook: [go.umkc.edu/DHAA](https://www.facebook.com/go.umkc.edu/DHAA) or search for UMKC DHAA.



ALUMNI AND FRIENDS GRATITUDE LUNCHEON

SATURDAY, APRIL 5 • NOON
COST: \$50/PERSON

Each year, the UMKC School of Dentistry takes time to honor and appreciate some of its outstanding alumni and friends for making a difference in our school community. Come help us celebrate these champions. Donors who gave \$250 or more in 2024 to the UMKC School of Dentistry, the Rinehart Foundation or the Alumni Associations will receive complimentary invitations to this event. All others who would like to attend, please mark your registration form.



SNDA/HSDA ALUMNI REUNION

SATURDAY, APRIL 5 • 5:30 P.M.

Hosted by the Student National Dental Association/Hispanic Student Dental Association and the UMKC School of Dentistry Office of the Dean.

All SNDA/HSDA members, alumni and friends are welcome to attend.

Join us for live music, games, door prizes, appetizers and drinks.

For questions:
Makini King, assistant dean for engagement and wellbeing
kingml@umkc.edu • 816-235-2169

**Midwest Dental Conference
University of Missouri-Kansas City
School of Dentistry
Office of Alumni and Advancement
650 E. 25th St.
Kansas City, MO 64108-2784**

UMKC is an equal opportunity, affirmative action institution.

UMKC CONTINUING EDUCATION CERTIFICATION

UMKC School of Dentistry – ADA CERP Recognized Provider

Continuing education credits issued for participation in CE activities may not apply toward license renewal in all states. It is the responsibility of each participant to verify the requirements of their state licensing board(s). Participants should retain this document for their records.

University of Missouri-Kansas City School of Dentistry is an ADA CERP Recognized Provider. ADA CERP is a service of the American Dental Association to assist dental professionals in identifying quality providers of continuing dental education. ADA CERP does not approve or endorse individual courses or instructors, nor does it imply acceptance of credits hours by boards of dentistry.

The current term of approval extends Nov. 2023 through Dec. 2027. The University of Missouri-Kansas City School of Dentistry is also designated as an Approved PACE Program Provider (#214214) by the Academy of General Dentistry with approval from Jan. 2022 through Dec. 2024.

